

Tail Dining Chair - Fully upholstered, High back and Low back

Designed by GamFratesi - 2018



ITEM NUMBER

11209 Tail Dining Chair - Fully Upholstered, High back

11210 Tail Dining Chair - Fully Upholstered, Low back

DESCRIPTION

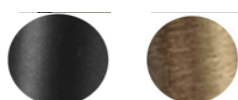
Designed by award-winning duo GamFratesi, the Tail Chair holds a playful nature, with its rounded back resembling the spectacular form of a peacock tail. The Tail Chair reflects the combination of GamFratesi's design traditions, where the perfect synergy is found between the Italian playfulness, sculptural and artistic aesthetics and the Danish sense for craftsmanship, detailing and refinement of form.

Available in both a low and high-backed version, the Tail Chair is perfectly suited for public settings such as lounges, lobbies and reception areas.

Materials & Finishes

BASE FINISH

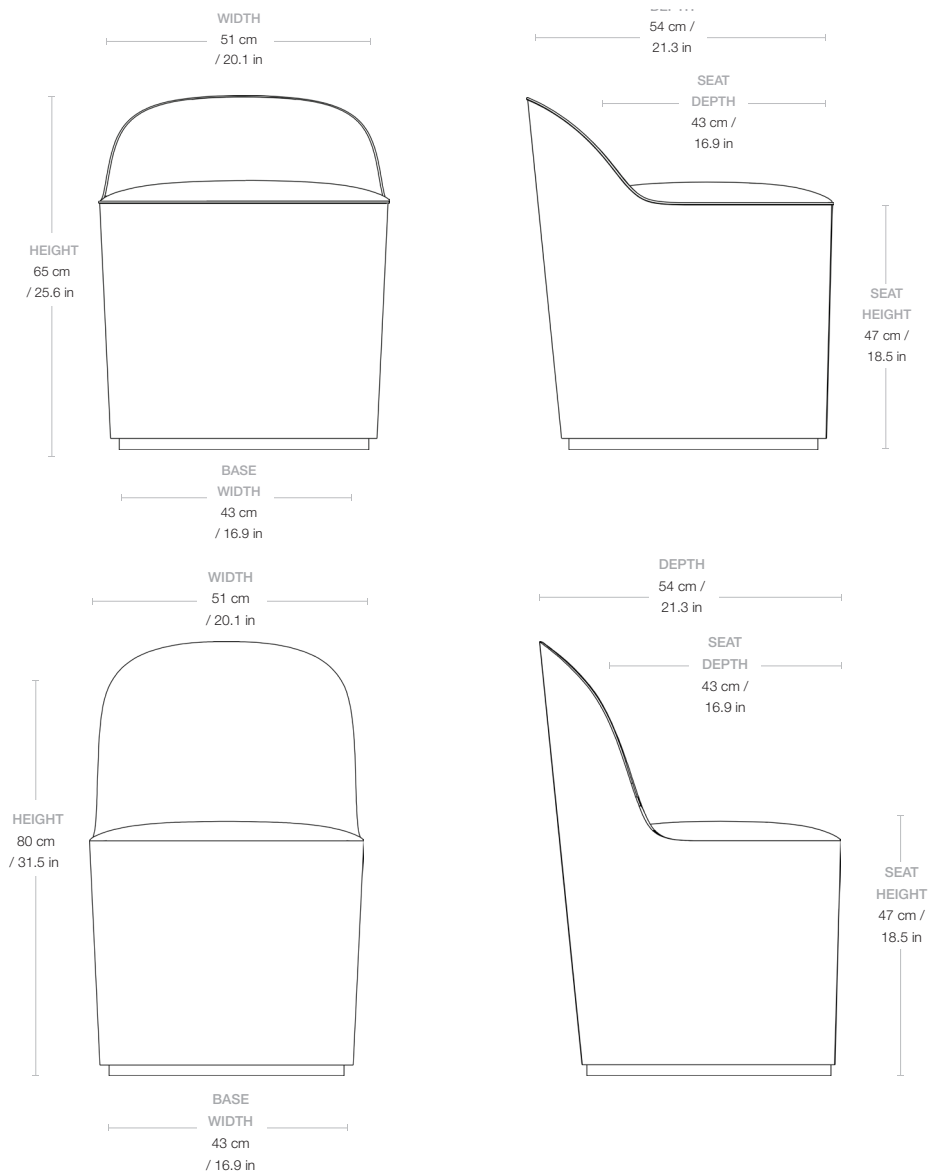
Black Matt Base and Antique Brass Base



MATERIALS

Steel frame, Polyurethane foam, Dacron wadding, Rubber belts, Fabric or leather upholstery, MDF base, Steel base cover.

Dimensions



WIDTH	51 cm / 20.1 in
DEPTH	54 cm / 21.3 in
HEIGHT	80 cm / 31.5 in High back 65 cm / 25.6 in Low back
SEAT WIDTH	51 cm / 20.1 in
SEAT DEPTH	43 cm / 16.9 in
SEAT HEIGHT	47 cm / 18.5 in

Weight

TOTAL WEIGHT	10.5 kg / 23.4 lbs - Low back 12.5 kg / 27.6 lbs - High back
--------------	---

Upholstery Consumption

FABRIC

X 140 CM FABRIC WIDTH / X 55 IN FABRIC WIDTH

FABRIC CONSUMPTION 160 cm / 63 in

LEATHER

LEATHER CONSUMPTION 2.5 m² / 26.9 ft² - Low back

2.9 m² / 31.2 ft² - High back

Packaging

NUMBER OF PARCELS 1

PACKAGING LENGTH 59 cm / 23.2 in

PACKAGING WIDTH 56 cm / 22.0 in

PACKAGING HEIGHT 70 cm / 27.6 in - Low back

85 cm / 33.5 in - High back

PACKAGING WEIGHT 0.3 kg / 0.7 lbs

GROSS WEIGHT 10.8 kg / 23.8 lbs - Low back

12.8 kg / 28.2 lbs - High back

Test & Certifications

CALIFORNIA TB 117 Yes

BS 5852 - CRIB 5 Available on request

FSC Yes

TSCA Title VI Yes

Glides

FELT PADS Come with chair